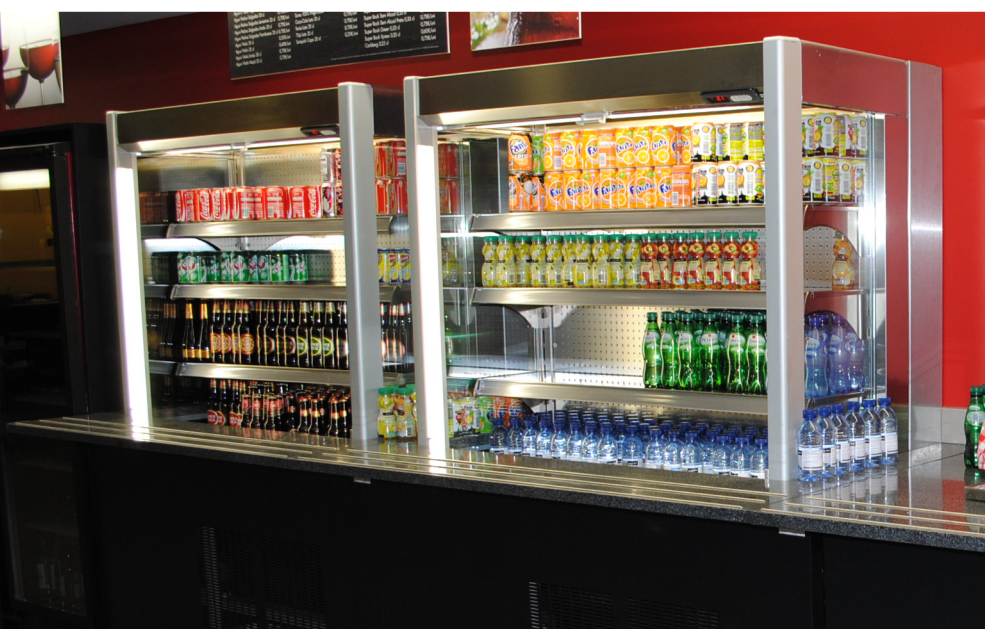


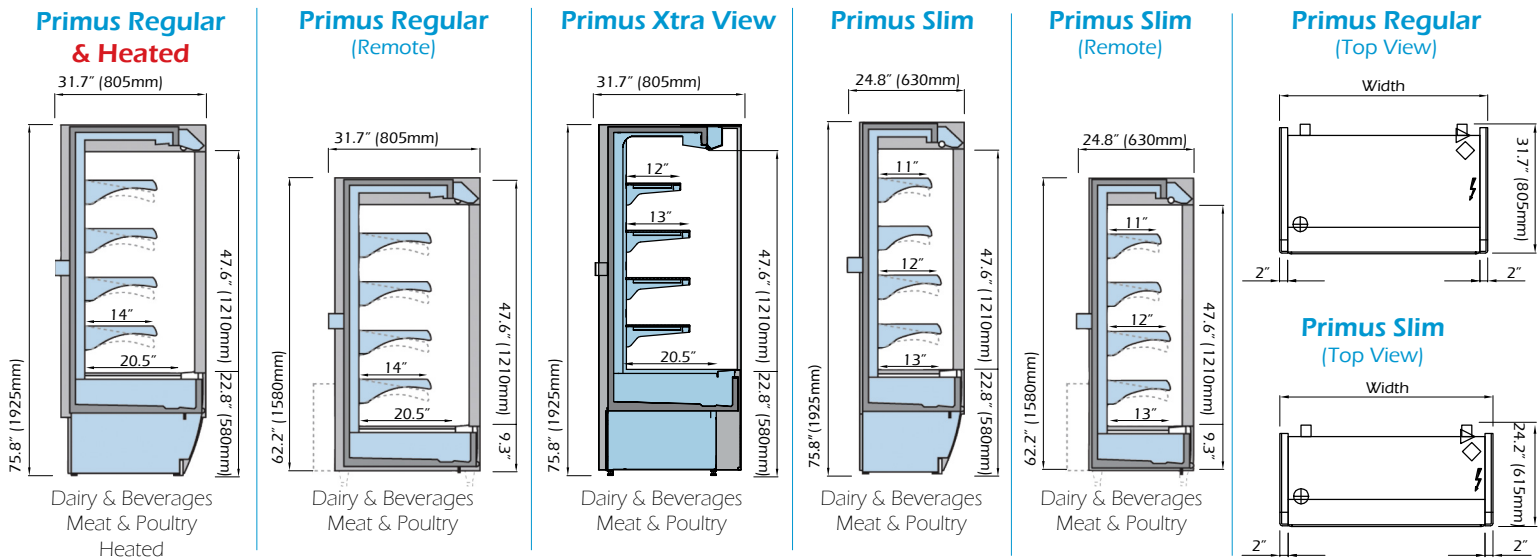


# PRIMUS

## GRAB & GO MERCHANDISER FEATURES:

- Multi-deck available in 3 versions:  
Regular Standard Depth  
Slim Narrow Depth
- Offered in various size configurations
- Classic European design – simple, stylish, elegant & functional
- Maximizing visibility with wide product display area
- Ventilated cooling system, with 2 classes of temperatures for Dairy Products and for Meat and Poultry
- Interior area & Shelving Design:  
Standard White or Stainless Steel
- Custom color finishing and design options for Interior and End Panel





## DISPLAY CASES

Type	Model	Width	Depth	Height with 3" casters	Electrical Requirements
<b>Primus Regular</b>	MPL - 70	27.6" (700mm)	32.3" (805mm)	77.7" (1925mm)	115V/1Phase/60Hz/21 Amps
	MPL - 90	35.5" (900mm)	32.3" (820mm)	77.7" (1925mm)	115V/1Phase/60Hz/22 Amps
	MPL - 130	51.2" (1300mm)	32.3" (820mm)	77.7" (1925mm)	115V/1Phase/60Hz/25 Amps
	MPL - 150	59.1" (1500mm)	32.3" (820mm)	77.7" (1925mm)	115V/1Phase/60Hz/25 Amps
	MPL - 190	74.8" (1900mm)	32.3" (820mm)	77.7" (1925mm)	115V/1Phase/60Hz/38 Amps
<b>Heated</b>	MPAQV - 70	27.6" (700mm)	32.3" (805mm)	77.7" (1925mm)	115V/1Phase/60Hz/15 Amps
	MPAQV - 90	35.5" (900mm)	32.3" (820mm)	77.7" (1925mm)	115V/1Phase/60Hz/14 Amps
<b>Primus Xtra View</b>	MPXT - 70	29.1" (740mm)	30.8" (783mm)	77.7" (1925mm)	115V/1Phase/60Hz/21 Amps
	MPXT - 90	37" (940mm)	30.8" (783mm)	77.7" (1925mm)	115V/1Phase/60Hz/22 Amps
	MPXT - 130	52.8" (1340mm)	30.8" (783mm)	77.7" (1925mm)	115V/1Phase/60Hz/26 Amps
<b>Primus Slim</b>	MPSL - 70	27.6" (700mm)	24.8" (630mm)	77.7" (1925mm)	115V/1Phase/60Hz/21 Amps
	MPSL - 90	35.5" (900mm)	24.8" (630mm)	77.7" (1925mm)	115V/1Phase/60Hz/22 Amps
	MPSL - 130	51.2" (1300mm)	24.8" (630mm)	77.7" (1925mm)	115V/1Phase/60Hz/25 Amps
	MPSL - 150	59.1" (1500mm)	24.8" (630mm)	77.7" (1925mm)	115V/1Phase/60Hz/25 Amps
	MPSL - 190	74.8" (1900mm)	24.8" (630mm)	77.7" (1925mm)	115V/1Phase/60Hz/38 Amps

## OPTIONS



Night Blind

Electronic Locking Gate

Grill Shelf Risers/  
Product Dividers

Grill Shelf Risers

Transparent Side Panels

3" Castors

All technical data, pictures and drawings contained in this document are not binding on the manufacturer, nor can the manufacturer be held liable for any modification of the machine, in part or in whole.