

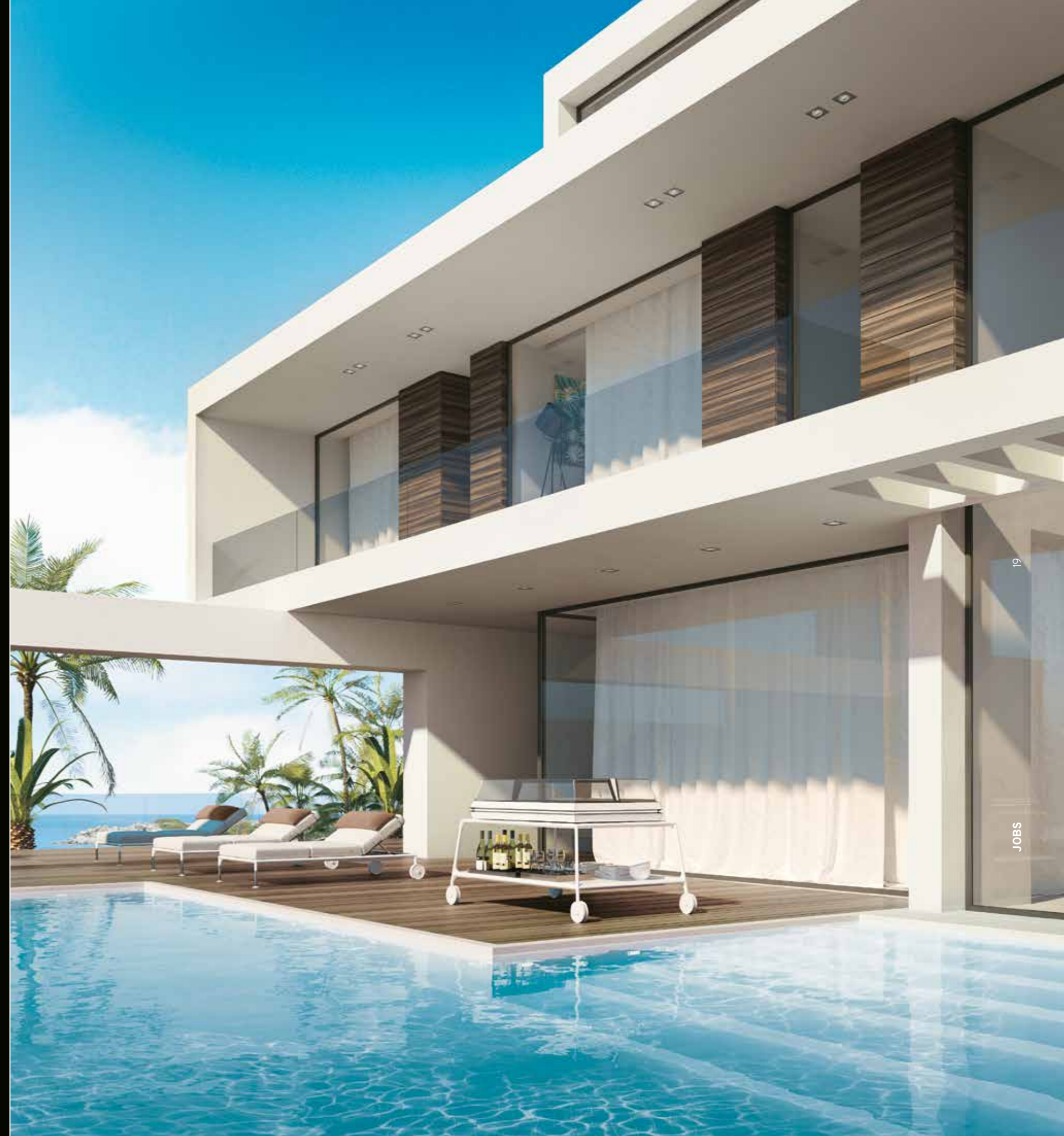
Jobs®  
T h i n k l a t e r a l

gti **DESIGNS**



Jobs is about freedom. Space planning made easy, while still achieving maximum visibility

You can bring Jobs  
wherever you want.



70cm display  
top 70cm

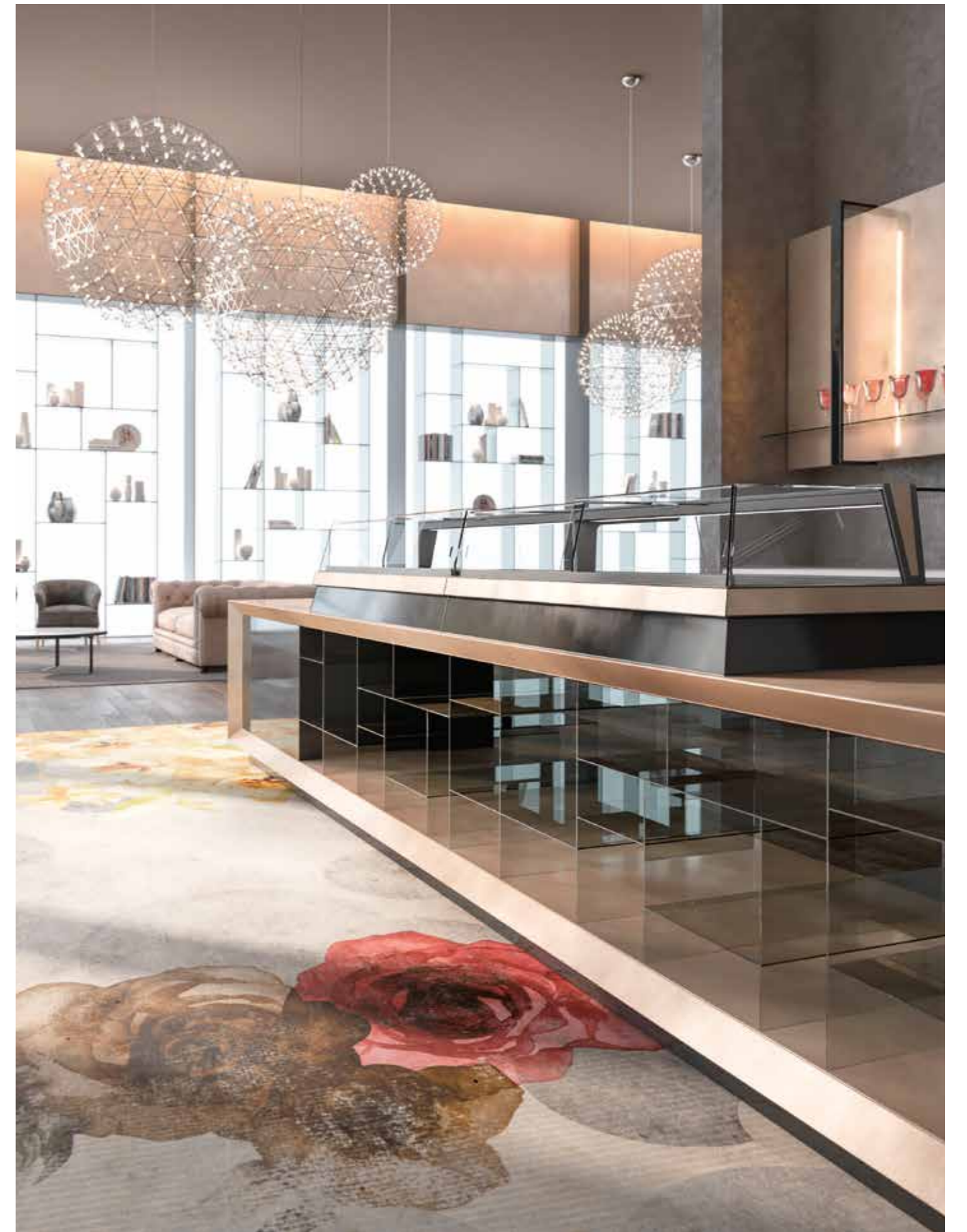
22

H23/H40 cm set  
of glasses H23/  
H40 cm

supporting  
furniture

Another dimension never seen before, it is the overall Jobs' depth. In 90 cm, you can put the 36 cm two row ice cream tubs or pastry professional trays, for a maximum capacity of 70 cm depth. The version with the set of glasses of 40 cm can be equipped with an intermediate shelf to increase the exposure capacity.

JOBS

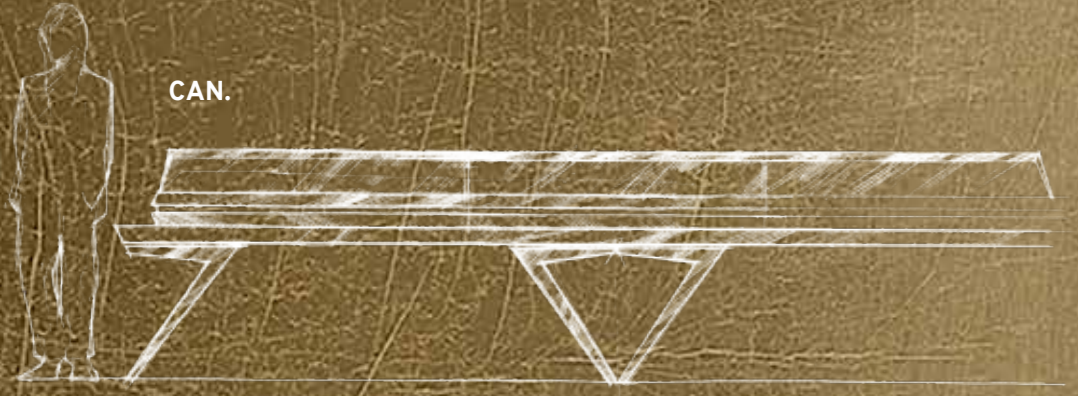


23

JOBS



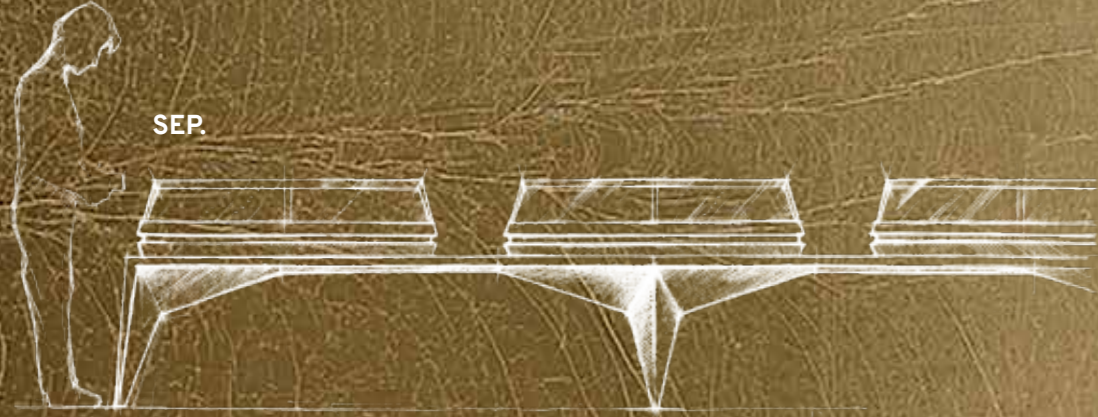




CAN.



ACS.



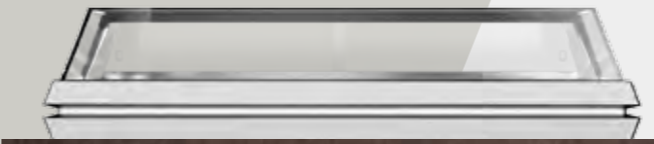
SEP.

Three ways to expose Jobs: **CAN.** Together, as one endless showcase, to see a large quantity of product. **ACS.** Together in the base but separate glass structure, to highlight the variety of products. **SEP.** Distinct, at the distance that you will require, as in the gesture of offering one "tray".

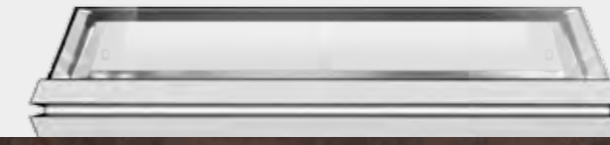




90cm



SEP.



CAN.



ACS.



Jobs gives an innovative and efficient chance to place more Jobs separated from each other but on the same surface. This will create intermediate spaces, both functional and aesthetic. Products will enjoy a better exposure. With a depth of 90 cm, Jobs can show two row ice cream tubs of 360 mm and 70 cm display levels to expose pastry and food.

Materiali  
Materials



*Jobs can lay on the furniture that best fits your location. Customize those 16 cm with any material you can choose and apply or that we could provide to you. Jobs has two display heights. 23 cm and the 40 cm version with one shelf. With Jobs you can canalize more showcases, choosing just one set of glasses or separate sets of glasses.*

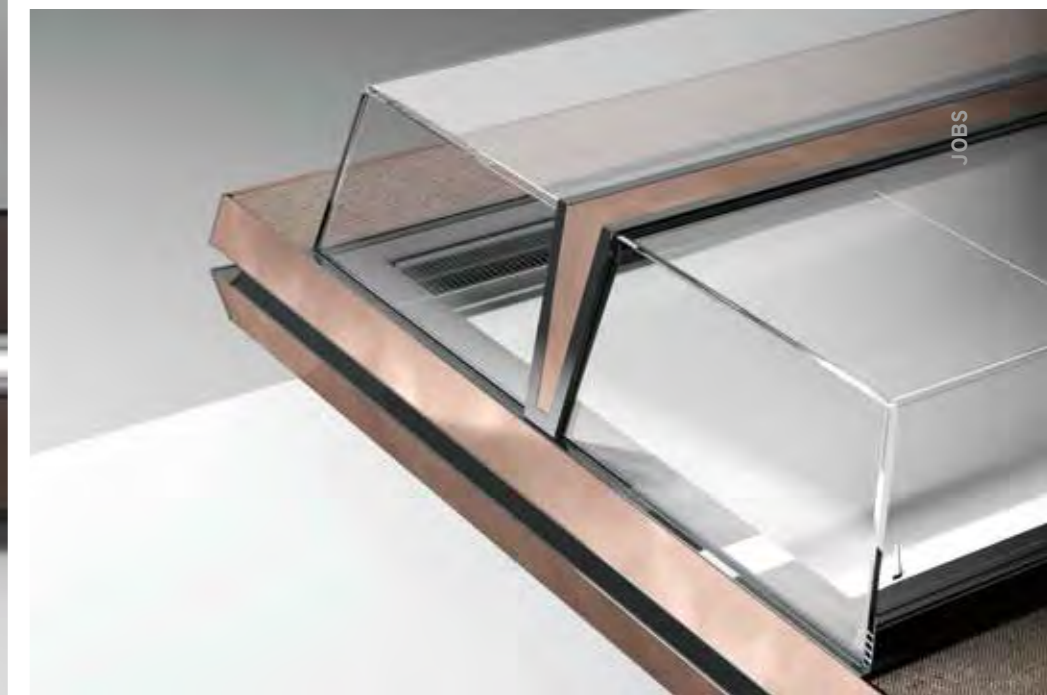
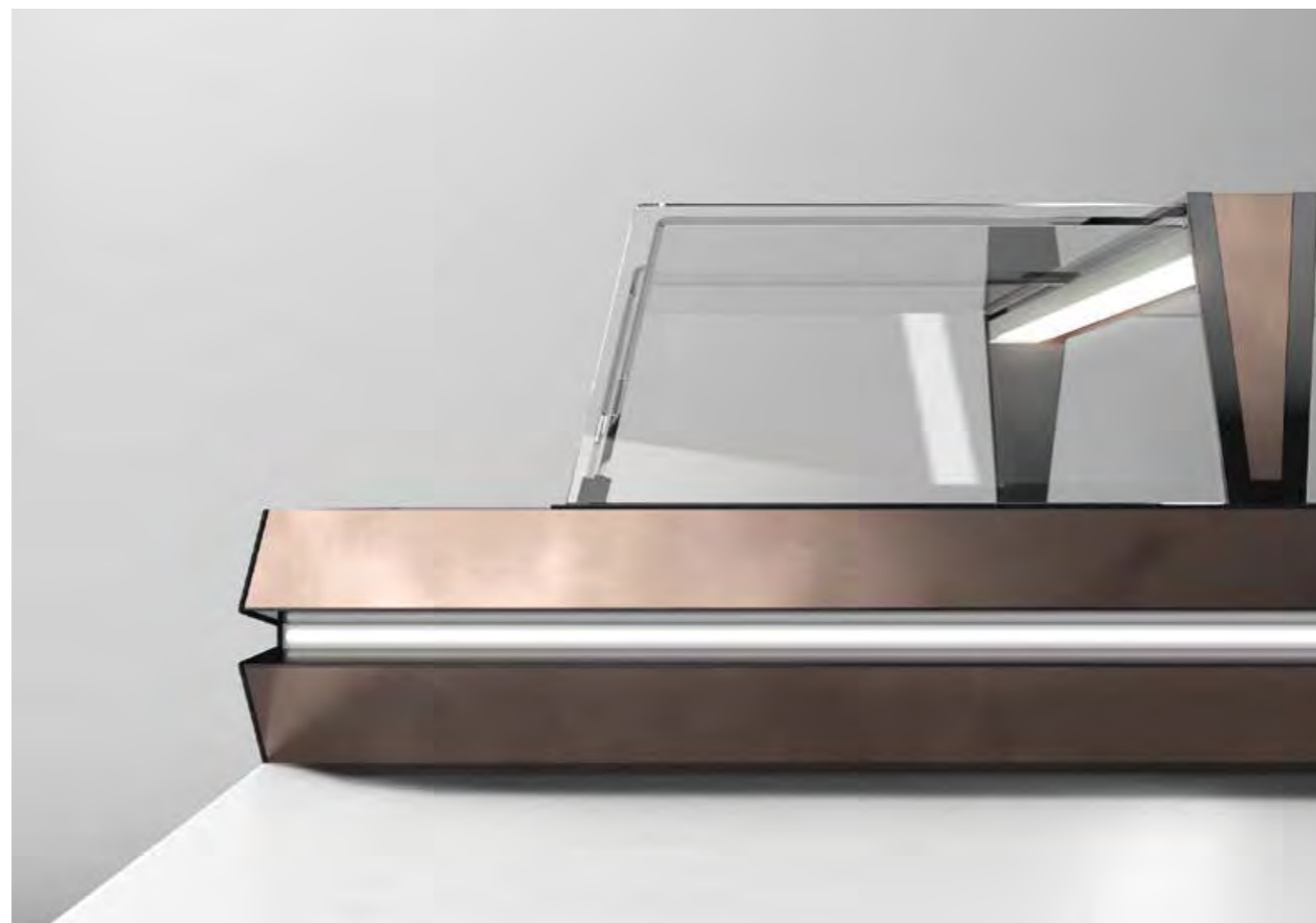
**Jobs.**  
Endless ways of being.



Functional/aesthetical shelf  
"storageleaning" - 10/30cm



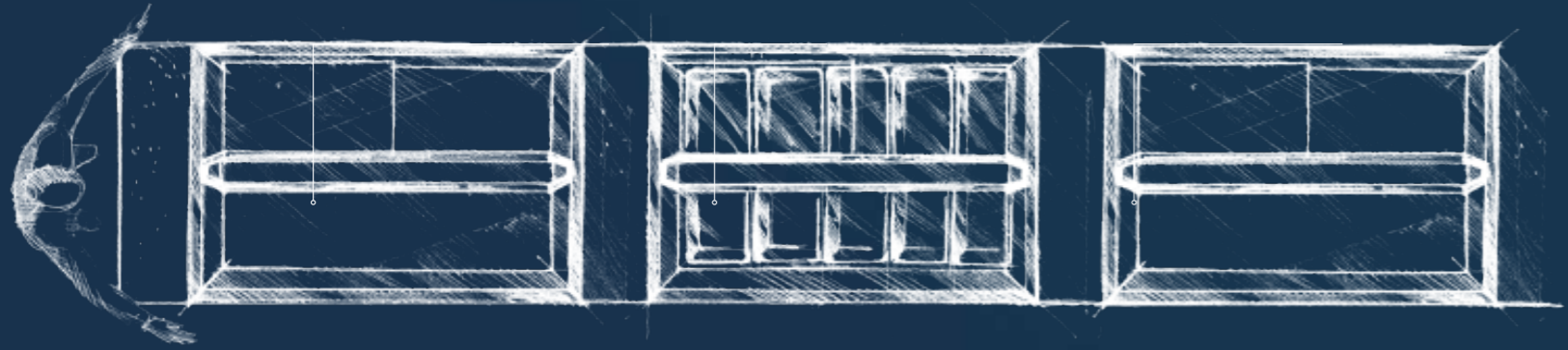
Jobs avoided superstructures, but we did not forget the operator behind the showcase. Indeed, we created tops (optional) in the dimensions that you will feel more functional. These tops can turn around your showcase and function as lateral support base and very useful shelf for customers to lean on. Choose how to make comfortable your day.





*With an easy gesture, Jobs can enrich you exposure spaces, both the small as the big locations.*





*The best Q/P relationship. This is the index measuring the Quantity (for instance ice cream) you can exhibit considering the overall Perimeter. Thanks to the depth reduction, Jobs can perform better. Jobs shortens by 25% the proportions and allows you to create all the spaces you will imagine..*



[www.gtidesigns.com](http://www.gtidesigns.com)

