

VERT

-4° | 64°

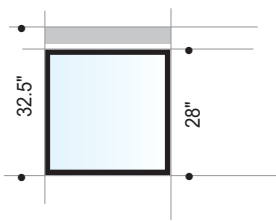
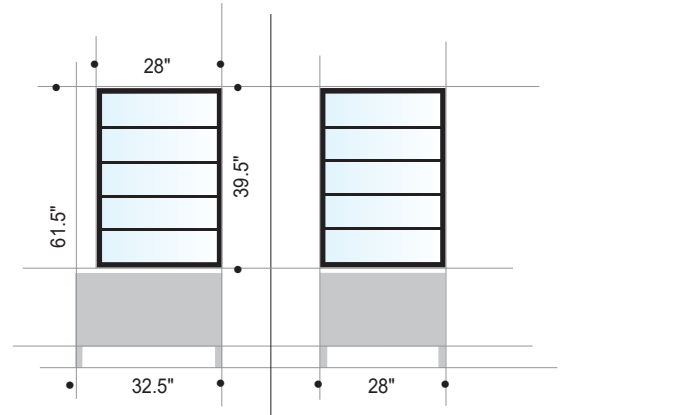


An innovative concept, both in size and function, which revolutionizes display systems. Available in 70 and 100cm sizes, we have created a display case with the best functional performance, display and price features.

A tip: use the **Vert** case to display your newest, most attractive or most profitable products, your special creations or those items you feel most passionate about.

VERT 70

-4° | +64°



CONSERVATION TECHNOLOGY:
COLD (-4°/ +64°)
SUBZERO

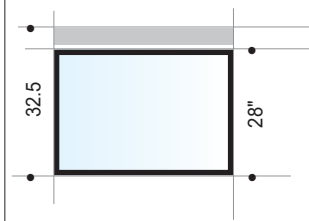
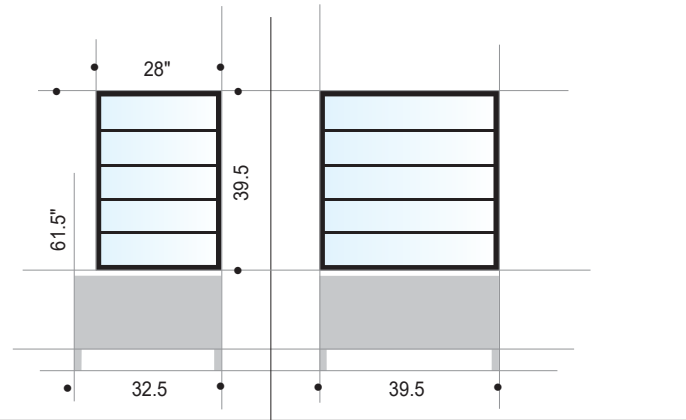
OPENING MECHANISMS:
Access to display shelves through panel opening (right-or left-swinging) on the serving side, with an aluminium handle "flush" mounted on the display cabinet.

DISPLAY SOLUTIONS:
The glass panels are made of double IGU, tempered and serigraphed glass.



VERT 100

-4° | +64.4°



CONSERVATION TECHNOLOGY:
COLD (35.6°/ +64.4°)
SUBZERO

OPENING MECHANISMS:
Access to display shelves through
panel opening
(right- or left-swinging) on the serving
side, with
an aluminium handle "flush" mounted
on the display cabinet.

DISPLAY SOLUTIONS:
The glass panels are made of double
IGU, tempered and serigraphed glass.



VERT 100





35 Trade Zone Court, Ronkonkoma, NY 11779
631-981-2100 | www.gtidesigns.com