

# Stainless Steel Back Bars



P50 refrigerated units and modules stainless steel bar  
modules neutral P60 refrigerated units and modules

gti **DESIGNS**



## BUILT-INOX

This collection includes stainless steel products designed for the functionality and comfort of those who use it.

### P50

refrigerated units and modules



19.7"

### BAR INOX

stainless steel bar modules neutral



24"

### P60

refrigerated units and modules



24"



# P50

refrigerated units and modules



**AMBIENT**  
Temperature  $-^{\circ}$



**T+**  $+39.2^{\circ}/+42.8^{\circ}$   
Refrigerated  
Temperature



**BT**  $-0.4^{\circ}/-4^{\circ}$   
Frozen  
Temperature

A series of refrigerated cells and modules to be adapted to any premise or project. The length of a single module or cell is 50 cm, which explains the acronym "P50" or "length 50".

It boasts 3 kinds of cooling technologies, 4 heights and 3 widths: the range of products includes all the features.



07

**+** T+ +39.2°/+42.8°  
Refrigerated  
Temperature

**✖** BT -0.4°/-4°  
Frozen  
Temperature

**□** AMBIENT  
Temperature \_ °



**Clean. Easy to Use. Accessible. Efficient.**



P50 refrigerated cells and modules are technological solutions designed to last for a long time.



+ T+ +39.2°/+42.8°  
Refrigerated  
Temperature

Request glass doors for enhanced visibility.



+ T+ +39.2°/+42.8°  
Refrigerated  
Temperature

\* BT -0.4°/-4°  
Frozen  
Temperature







# Bar Inox



**AMBIENT**  
Temperature \_°

A new project for open stainless steel modules is designed to contain, organize and arrange any object needed by the professionals while working.

**3 heights, 4 widths, 6 linear modules, 20 corner modules.  
A range of open modules to design any furnishings solutions.**



**AMBIENT** °  
Temperatura Ambiente  
Ambient temperature

This brand new stainless steel structure is functional, solid, sustainable. The handle is integrated in the structure for more functional openings, both for doors and sliding doors. The internal and lower display shelves can be fully pulled out. Functional couplers are placed on the display shelves to ensure the cables are safely installed. A series of options is foreseen for a specific usage in order to insert the modules in any design.





# P60

Refrigerated units and modules



T+ +39.2°/  
+42.8°  
Refrigerated  
Temperature



**BT**  
-0.4°/-4°  
Frozen  
Temperature

Refrigerated cells and modules with 24" long modules for a complete accessibility to the refrigerated module which is also useful for loading the products to be preserved, functional and efficient during the working hours.

**3 cooling systems, 4 heights, 2 widths. An exclusive range of products to be adapted to any premise.**



T+ **+39.2°/+42.8°**  
Refrigerated  
Temperature



T+ +39.2°/  
+42.8°  
Refrigerated  
Temperature



**BT**  
-0.4°/-4°  
Frozen  
Temperature













T+ +39.2°/+42.8°

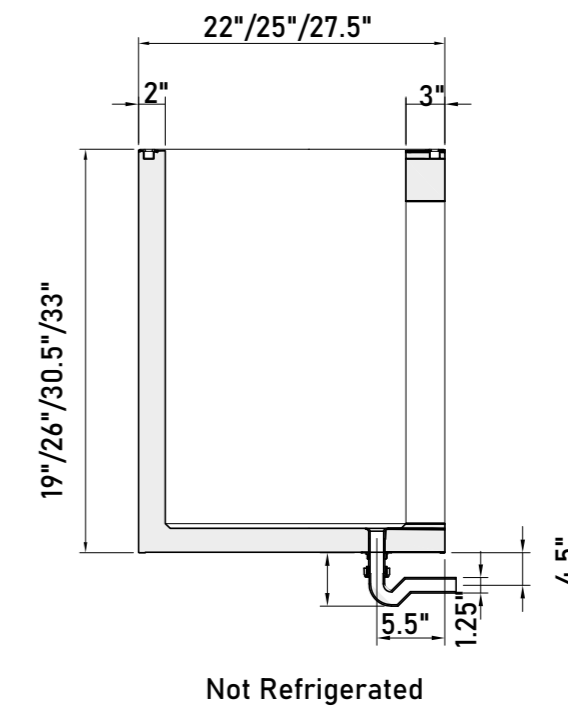
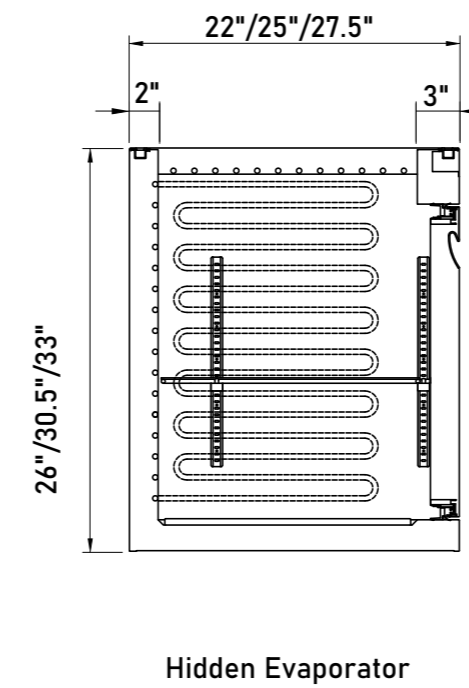
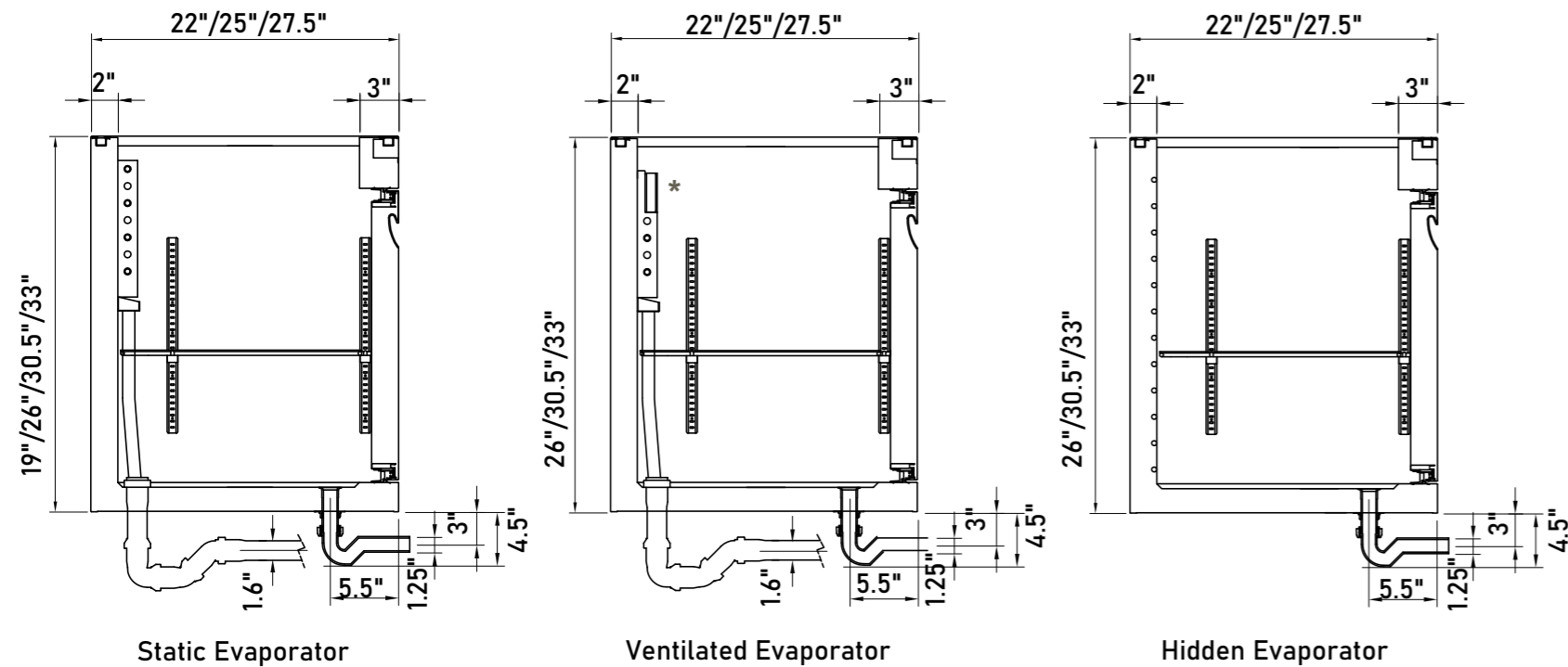
Refrigerated Temperature



Ambient —°  
Temperatura Ambiente  
room temperature

BT

-0.4°/-4° Frozen Temperature



Range	H	P
- with refrigerating unit	19"	25"/27.5"
- without refrigerating unit	26"	22"/25"/27.5"
- with compress or housing external refrigerating unit	30"	22"/25"/27.5"
	33"	22"/25"/27.5"

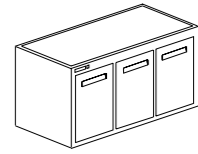
Range	H	P
- with refrigerating unit	26"	22"/25"/27.5"
- without refrigerating unit	30"	22"/25"/27.5"
- with compress or housing external refrigerating unit	33"	22"/25"/27.5"

Range	H	P
- with refrigerating unit	26"	22"/25"/27.5"
- without refrigerating unit	30"	22"/25"/27.5"
- with compress or housing external refrigerating unit	33"	22"/25"/27.5"

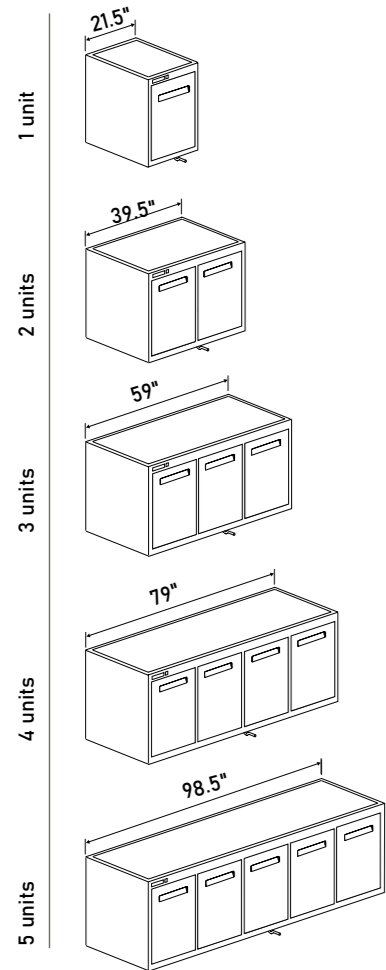
Range	H	P
- with refrigerating unit	26"	22"/25"/27.5"
- without refrigerating unit	30"	22"/25"/27.5"
- with compress or housing external refrigerating unit	33"	22"/25"/27.5"

Range	H	P
- with refrigerating unit	19"	25"/27.5"
- without refrigerating unit	26"	22"/25"/27.5"
- with compress or housing external refrigerating unit	30"	22"/25"/27.5"
	33"	22"/25"/27.5"

# Lengths

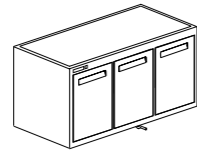


H	P	Length
19"	25"/27.5"	Only static evaporator.
26"	22"/25"/27.5"	1 unit cell not available with ventilated evaporator version)
30.3"	22"/25"/27.5"	1 unit cell not available with ventilated evaporator version)
33"	22"/25"/27.5"	1 unit cell not available with ventilated evaporator version)

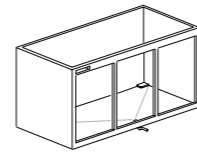
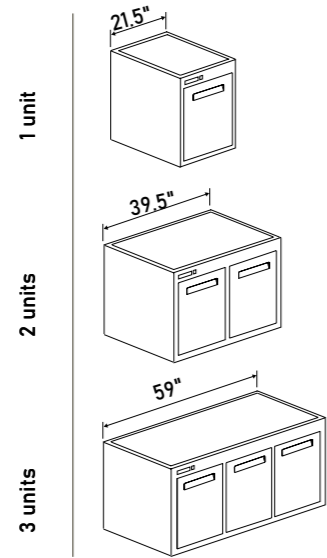


not available for unit with ventilated evaporator

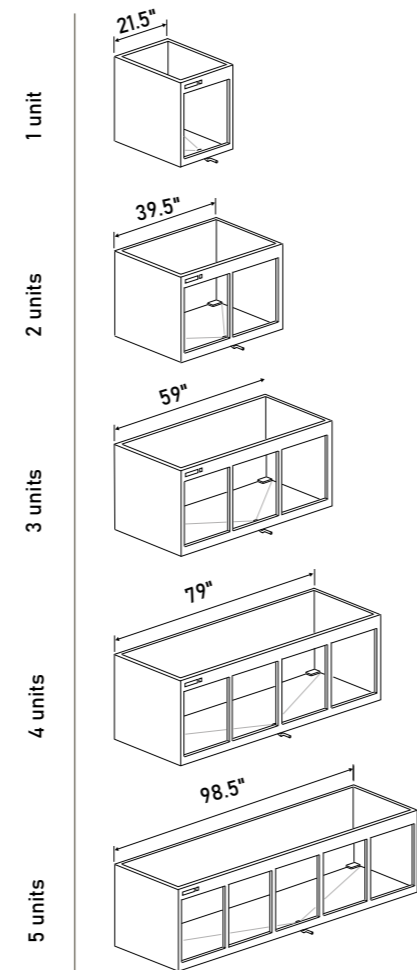
**BT**  
-0.4°/-4°  
Frozen Temperature



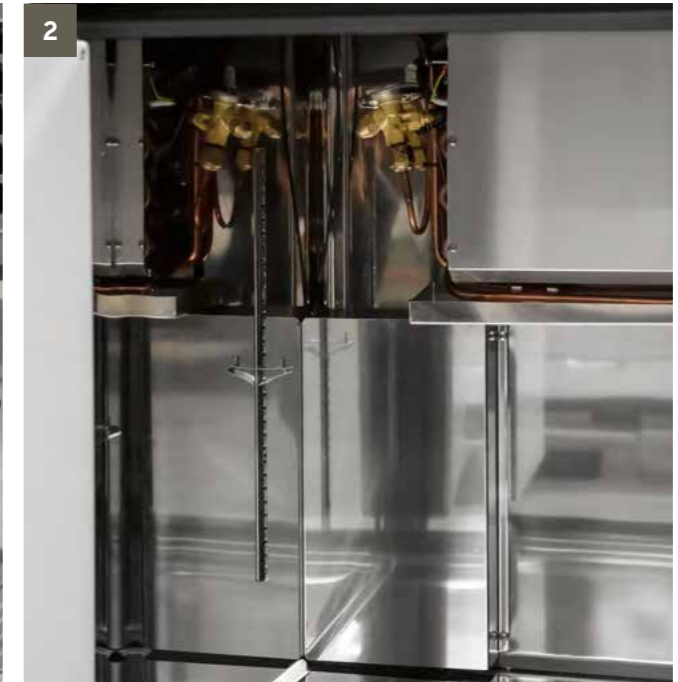
H	P	Length
26"	22"/25"/27.5"	1/3 units
30.5"	22"/25"/27.5"	1/3 units
33"	22"/25"/27.5"	1/3 units



H	P	Length
19"	25"/27.5"	1/3 units
26"	22"/25"/27.5"	1/5 units
30.5"	22"/25"/27.5"	1/5 units
33"	22"/25"/27.5"	1/5 units



not available for unit with H480 unit



- 1** **STATIC EVAPORATOR**

**SOFT REFRIGERATING SYSTEM:** the static evaporator is placed on the lower wall of the cell on its entire length and ensures a soft distribution of the cold air inside the refrigerated module. The static evaporator is a standard equipment for the refrigerated counters and back counters foreseen in the catalogue. It is always foreseen a condense water tub ensuring the perfect elimination of exceeding liquids inside the cell.
- 2** **VENTILATED EVAPORATOR**

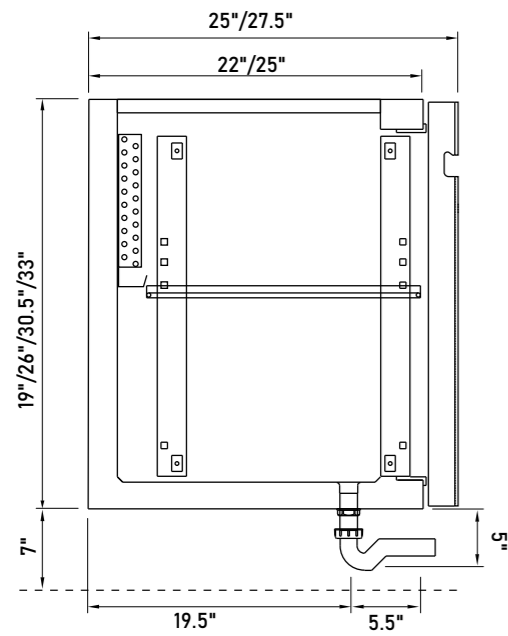
**OPTIMUM TEMPERATURE:** thanks to the fans placed next to the evaporator, the cold air is distributed in a uniform way inside the module. The temperature in the lower section of the cell is reached in less time. Furthermore this modules is equipped with the condense water tub.
- 3** **DROWNED EVAPORATOR**

**COMPLETE ACCESSIBILITY:** the cell compartment is completely accessible to be cleaned and to load the products to be preserved. The cold temperature is ensured by means of drowned coils inside the cells structure in order to ensure the stead refrigeration.



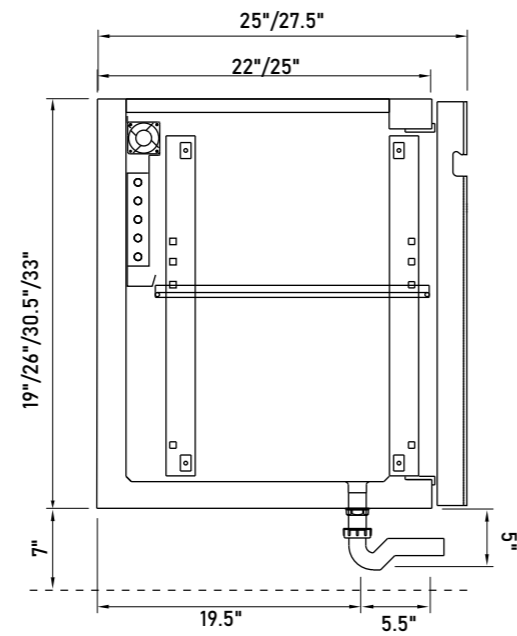
T+ +39.2°/+42.8°

Refrigerated Temperature



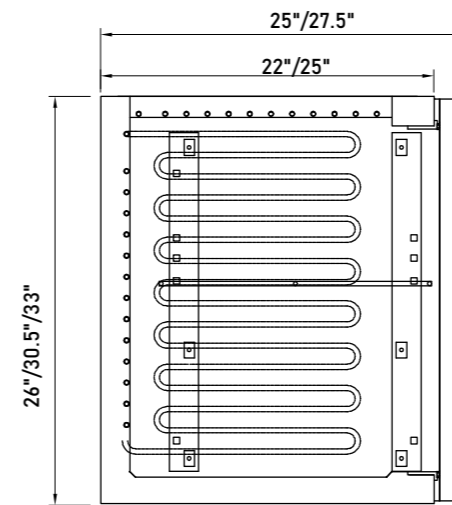
### static evaporator

Range	H	P
- With refrigerating unit	19"	25"/27.5"
- without refrigerating unit	26"	25"/27.5"
- with compressor housing external refrigerating unit	30.5"	25"/27.5"
	33"	25"/27.5"



### EVAPORATORE VENTILATO ventilated evaporator

Range	H	P
- with refrigerating unit	26"	25"/27.5"
- without refrigerating unit		
- with compressor housing external refrigerating unit	30.5"	25"/27.5"
	33"	25"/27.5"



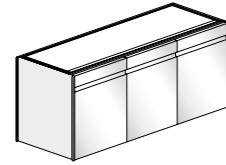
### EVAPORATORE ANNEGATO hidden evaporator

Range	H	P
- with refrigerating unit	26"	25"/27.5"
- without refrigerating unit		
- with compressor housing external refrigerating unit	30.5"	25"/27.5"
	33"	25"/27.5"

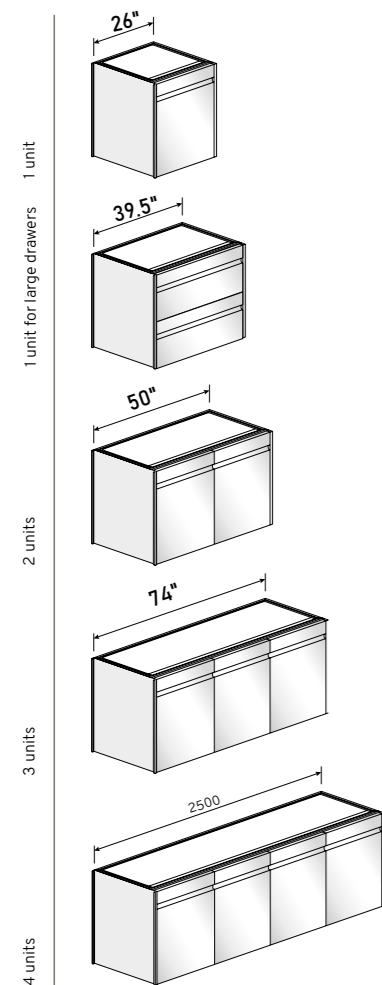
# Length

**T+** +4°/+6°

**Temperatura Positiva**  
positive temperature

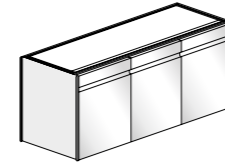


H	P	Length
19"	25"/27.5"	Only static evaporator)
26"	25"/27.5"	1 unit cell not available with ventilated evaporator version)
30.5"	25"/27.5"	1 unit cell not available with ventilated evaporator version. (1 unit for large drawers)
33"	25"/27.5"	1 unit cell not available with ventilated evaporator version (1 unit for large drawers)

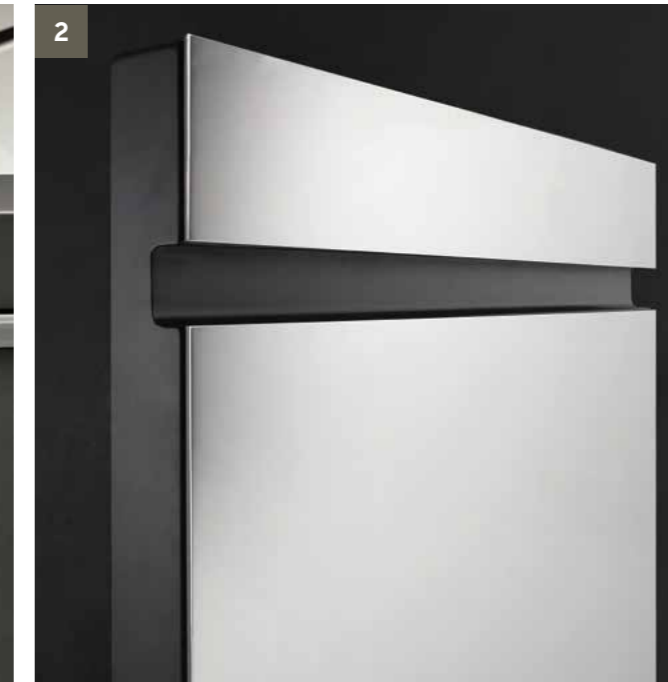
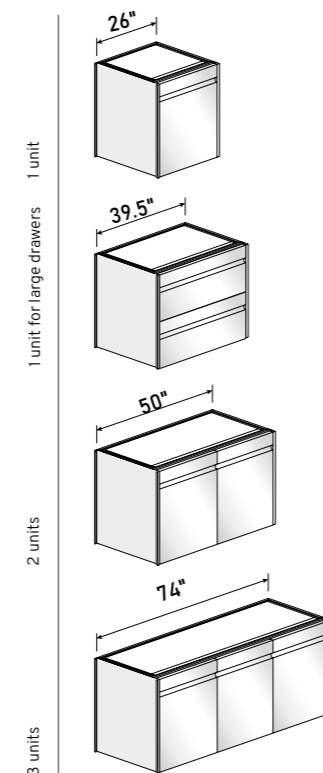


**BT** -18°/-20°

**Temperatura Negativa**  
low temperature



H	P	Length
26"	25"/27.5"	1/3 units
30.5"	25"/27.5"	1/3 units
33"	25"/27.5"	1/3 units



## 1 OPENING SYSTEM

The opening system of the refrigerated door is based on a hinge, which has been patented, ensuring the complete accessibility to the cell's internal area. Such an opening system is designed to make the compartment completely visible and free in order to easily load it and gain access to the preserved products.

## 2 DOOR

The doors' innovation is the result of the combination between two materials ensuring the stiffness and the high insulating standards, together with an unexpected lightness. The total thickness of the door without the front customization is 50 mm. A recess to the doors' full length ensures a safe grip when opening the doors.

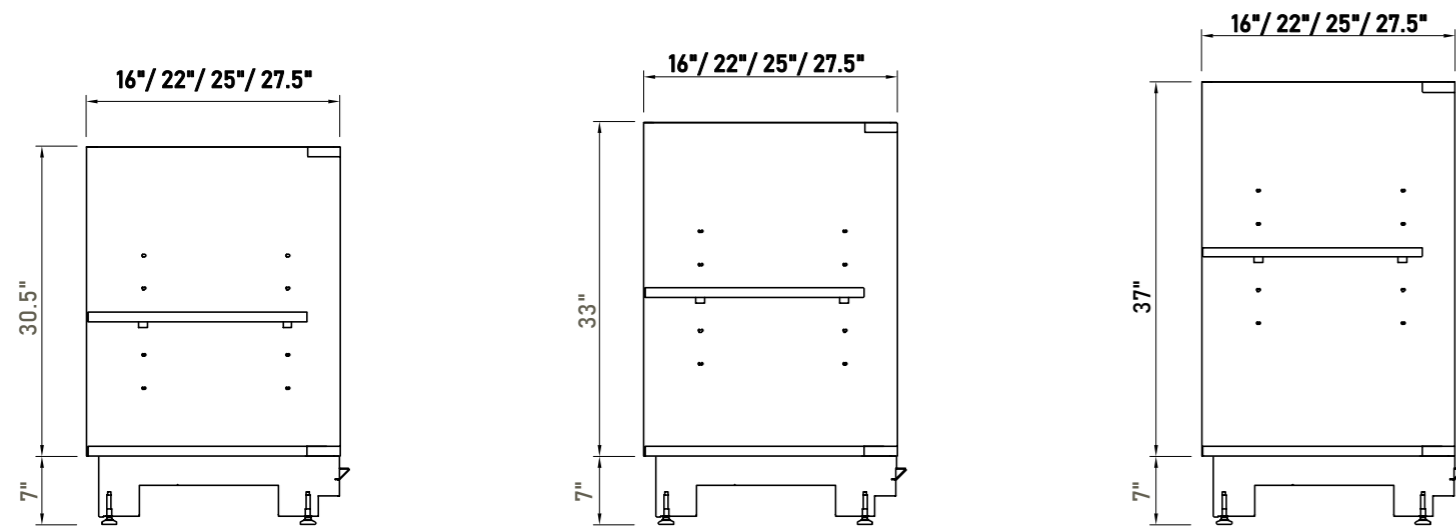
## 3 CUSTOMISATION

All opening systems of the p60 cells can be customized on the front section with covering made of various materials: lacquered materials, wood, ceramic tiles. A system of cells enabling the design of one-of-a-kind work places.

# Moduli Bar Inox

Stainless Steel Modules

## Units

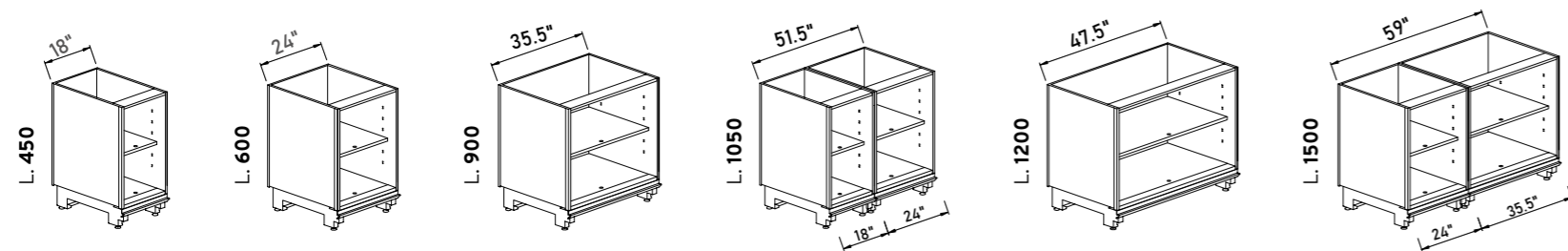


**H 940**  
Open Modules

**H 1000**  
Open Modules

**H 1100**  
Open Modules

## Range



Range includes Open and Closed Corner: 45°/90°.



1

### STIFFNESS

The bar counters are made of pure stainless steel and are solid in terms of structure, being them based on elements shared by all the products' range. The stainless steel modules can be customized by adding display shelves and optional such as sinks, bottle holders and drawers making them adaptable to any premise.

2

### ACCESSIBILITY

Internal supporting surfaces in the modules are made of pure stainless steel and reinforced in order to ensure a higher separation power. The open module's accessibility is due to holes enabling the display shelves to be completely pulled out, including the lower display shelves when cleaning them.

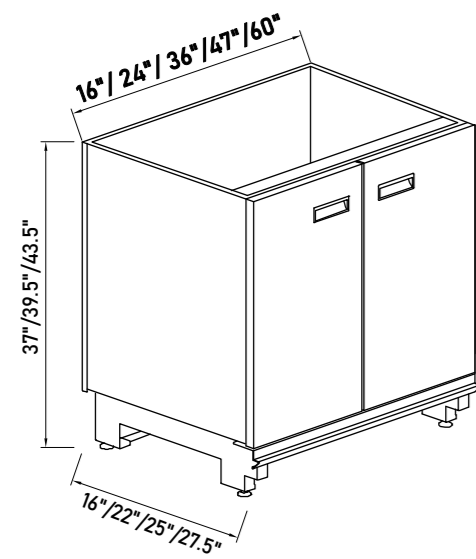
3

### BASE PANEL

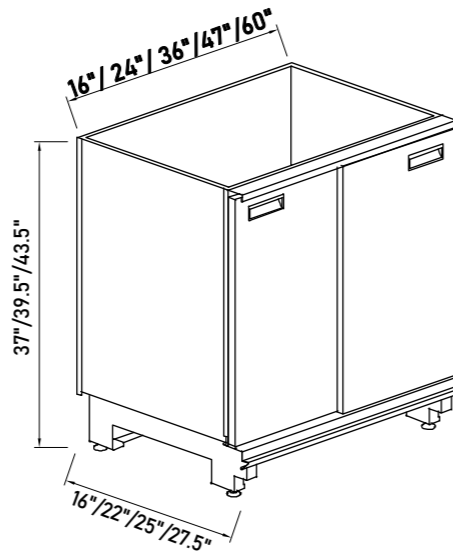
The stainless steel modules' design is based on the new core structure which promotes a better functionality when installing and using them. The galvanized iron sheet core structure has a unique design making it easier to place it in any premise. The decking support is always foreseen ut can be avoided if not necessary: it ensures the perfect alignment of the structure and is available among the optionals together with a band covering the decking to be customized and sized according to the plinth coverage without the decking itself (see page 13)

# P50

Bar Modules - P. 50 style



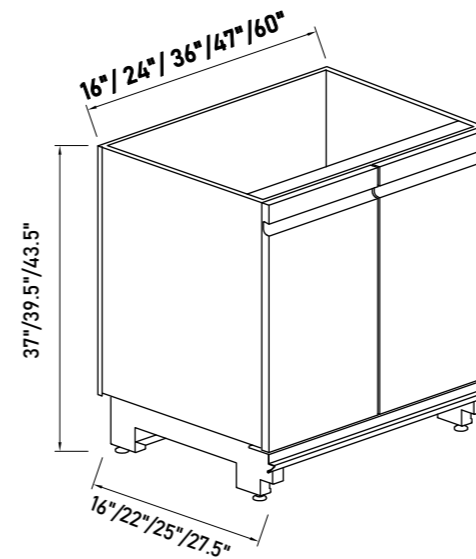
With door



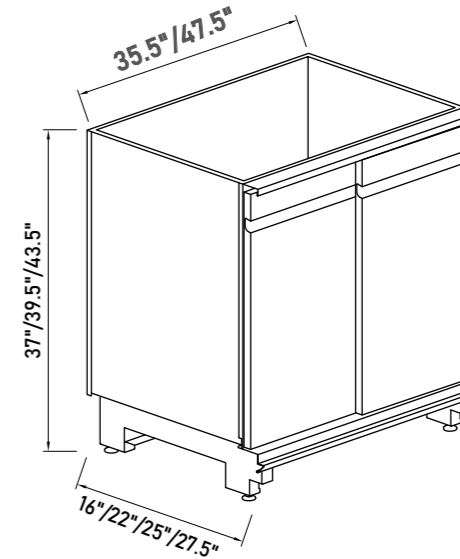
With Sliding doors

# P60

Bar Modules - P. 60 style



With door



With sliding doors



## HANDLE FOR P50 STAINLESS STEEL MODULES:

It is integrated in the door's structure and placed perfectly wired in the structure. It is ideal for furnishings boasting P50 cells. The sliding doors system is equipped with an efficient slow-closing system.



## HANDLE FOR P60 STAINLESS STEEL MODULES:

It is designed to perfectly match the P60 cells. It features a recess running through the entire length of the door. The front panels can be customized by means of RAL colours, wooden materials and ceramic tiles.





35 Trade Zone Court, Ronkonkoma, NY 11779  
CustomerService@gtidesigns.com | 631-981-2100